



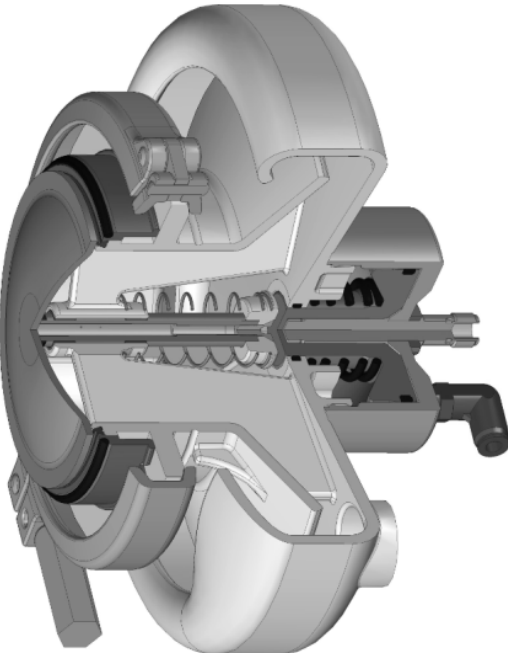
HpE Process Safety Valves



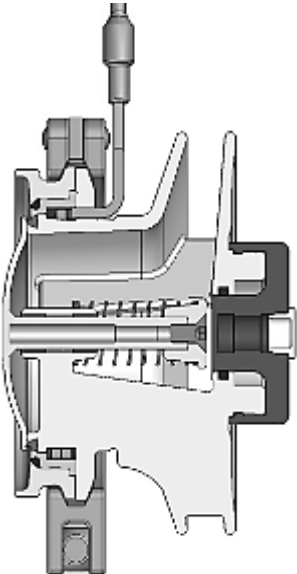
1.12 Range Vacuum Valve

New

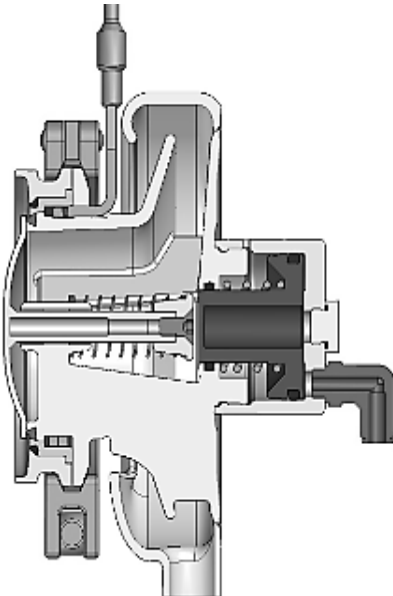
Used for protection of the tank against vacuum



Variants



Vacuum Valve



Vacuum Valve with
drip cup and
pneumatic actuation

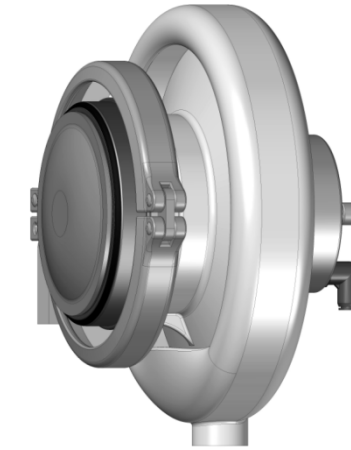
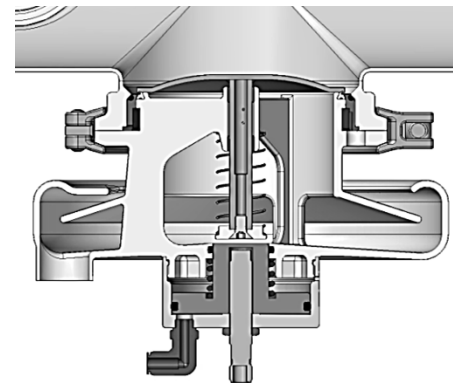
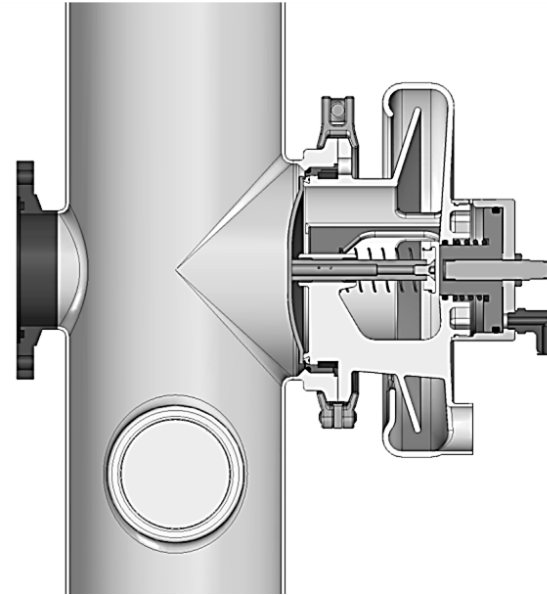
1.12 Vacuum Valve



Technical Details

- Horizontal installation position
 - connection welded directly to the crosspiece
- Vertical installation position
 - connection directly to the housing
- Seal material EPDM compliant with FDA 21 CFR 177.2600 and VMQ
- Opening pressure 0.033 psi (2.3 mbar) to 0.061 psi (4.2 mbar)
- Variants:
 - not liftable, without drip cup
 - liftable, with drip cup
- Options:
 - heater
 - monitoring via proximity switch

New



Customer Benefits

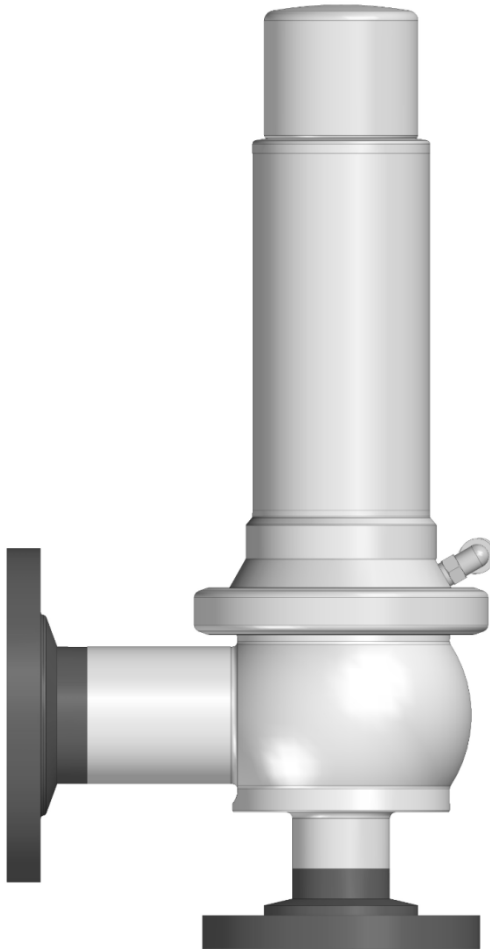


- Standard connection for welding
- Optimal cleaning conditions
- No dead space
- Outlet defined over drip cup
 - targeted discharge of fluid
 - no spraying
- Sediments from outside do not get into the tank because of horizontal installation position
- Easy assembly

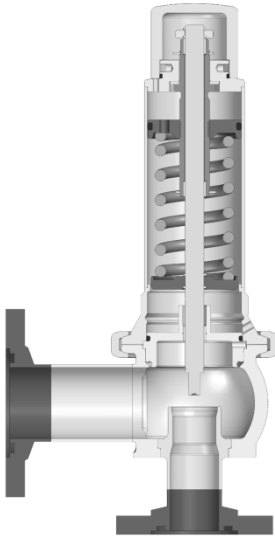
1.13 Range Safety Valve

New

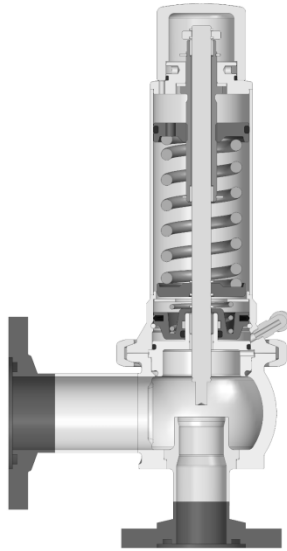
Used protection of the tank against overpressure



Variants



Safety Valve
manual lifting device



Safety Valve
pneumatic lifting device

1.13 Safety Valve



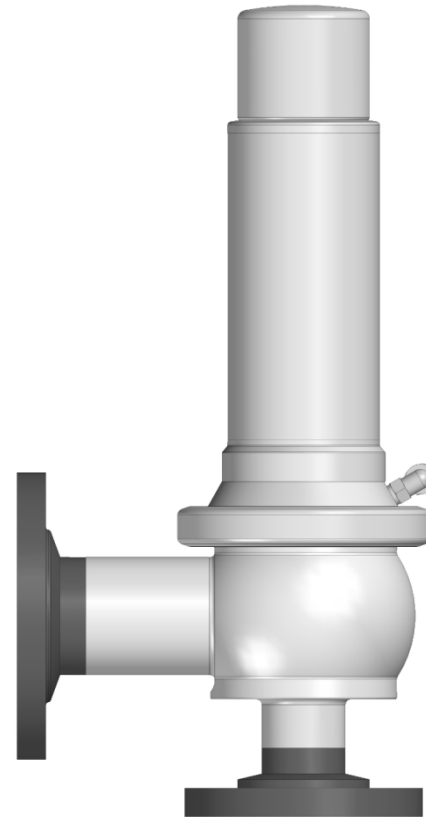
Technical Details

- TÜV-approvals
 - for steam, gases and liquids
- Mounting horizontal / vertical
- Seal material EPDM, FDA-compliant

- Set pressure according to specification
- Variants:
 - liftable with manual lifting device
 - liftable with pneumatic lifting device

- Option:
 - heater
 - monitoring via proximity switch

New



Customer Benefits



- Design and sealing systems analogous to seat valve
- Set pressure selectable
- Standard connections
- Outlet horizontal / vertical
- Easy assembly
 - change seals in the product room without recertification from control board
- Everything from one source